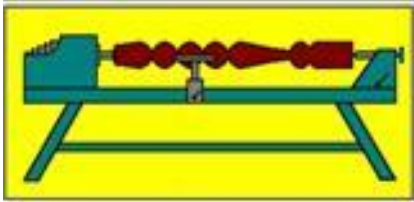


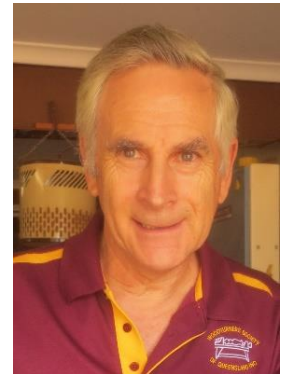
Turning Talk

Volume 34 Number 2

March 2020



Presidential Words *For March 2020*



February highlights included Kathy Wise's Intarsia demo, the Woodturning Discussion meeting on 'Goblets', and Mike Dodson's 'Goblet Challenge'.

It was great to see so many members getting involved in these activities. It was particularly gratifying to see so many members and visitors at Kathy's demo - although there were a few last-minute cancellations because of the weather, we had 52 participants.

Many thanks to Mike Dodson and John Carney for the catering, Phil Oostenbroek for turning the sausages, Alwyn Clark for the great work on the video cameras and Carbatec for sponsoring the event.

The display of goblets presented and discussed at the Forum meeting and the Goblet Challenge was impressive and inspiring (see below). Thanks to all those who contributed.

The next monthly Challenge will be 'Fruit', to be held on Tuesday 24 March. The Challenge will be preceded by Allan Dickson's hands-on demo on Saturday 7 March, with follow-up discussion at the April Discussion Forum (18 April).



Annual General Meeting and Life Membership Award Tuesday 17 March

Members are reminded that the AGM will be held at 9.30 am on Tuesday 17 March. The AGM agenda appears later in this newsletter.

As always, the Management Committee faced a big challenge in selecting a member who will be recommended for Life Membership at the AGM. According to our Constitution, an ordinary member who has actively practised the art and craft of woodturning, supports the objects of the Society and has rendered **conspicuous and exceptional services** to the Society is eligible for Life Membership. The Committee considered five members who satisfied these criteria, but only one Life Membership Award can be made in any calendar year.

I look forward to a strong turn-out of members for this important event in our calendar.

Brian Creese
President



Diary and Looking Ahead at WSQ March 2020 and Beyond

<i>Date</i>	<i>Day of Month</i>	<i>Session Title</i>	<i>Convenors</i>	<i>Times</i>
3 Mar	1 st Tuesday	Open Workshop New Member Training Pyrography Group Evening Open Workshop	John Sheppard & Bob McGeechan Rosie Thornton	8.00am – Noon 1.00pm – 3.30pm 1.00pm – 4.00pm 6.00pm – 9.00pm
5 Mar	1 st Thursday	WSQ Safety & Workshop Induction for New Members		9.00am – 12noon
6 Mar	1 st Friday	Toy and Open Workshop Toy Group Open Workshop	Peter Churchward	8.00am – 3.00pm
7 Mar	1 st Saturday	WSQ Demonstration		9.00am – Noon
10 Mar	2 nd Tuesday	Open Workshop New Member Training Pyrography Group Evening Open Workshop	Wayne Molloy Rosie Thornton	8.00am – Noon 1.00pm – 3.30pm 1.00pm – 3.30pm 6.00pm – 9.00pm
12 Mar	2 nd Thursday	Pre-Booked Project Tuition Cost - \$25.00	Rob McKee	9.00am – 12.30pm
13 Mar	2 nd Friday	Open Workshop	John Reed	8.00am to noon
14 Mar	2 nd Saturday	Management Committee Meeting	Rescheduled due to Swap and Sell Day	1.00pm – 4.30pm
17 Mar	3 rd Tuesday	Open Workshop New Member Training Pyrography Group Evening Open Workshop	John Sheppard & Bob McGeechan Rob McKee (Former DVA Team members welcome) Rosie Thornton John Sheppard	8.00am – Noon 1.00pm – 3.30pm 1.00pm – 3.30pm 6.00pm – 9.00pm
20 Mar	3 rd Friday	Open Workshop	John Reed	8.00am to noon
21 Mar	3 rd Saturday	Woodturning Discussion Forum	John Carney	9.00am – Noon
24 Mar	4 th Tuesday	Open Workshop New Member Training Pyrography Group Evening Open Workshop	Rob McKee Rob McKee (Former DVA Team members welcome) Rosie Thornton Mick Phythian	8.00am – Noon 1.00pm – 3.30pm 1.00pm – 3.30pm 6.00pm – 9.00pm
26 Mar	4 th Thursday	Pre-Booked Project Tuition Cost - \$25.00	Rob McKee	9.00am – 12.30pm
27 Mar	4 th Friday	Open Workshop	John Reed	8.00am to noon
31 Mar	5 th Tuesday Only if one falls in the month	Open Workshop New Member Training Pyrography Group Evening Open Workshop	Rob McKee Rob McKee Rosie Thornton Rob McKee	8.00am – Noon 1.00pm – 3.30pm 1.00pm – 3.30pm 6.00pm – 9.00pm
Future Events and Important Dates				
Saturday 7 March		Hands on demonstration by Allan Dickson - Topic: Making a piece of fruit - 9.00 to 12.30 - Maximum of 15 participants - Cost: \$5		
Saturday 14 March		WSQ Swap and Sell Day - 9.00 to Noon - Cost: \$0		
Tuesday 17 March		Annual General Meeting - 9.30 to 10.00		
Saturday 21 March		Woodturning Discussion Forum - Topic: Whatever you want - 9.00 to 12.30 - Cost: \$5		
Saturday 4 April		Demonstration by Brian Creese - Topic: Turning a lidded container from a lawn bowl - 9.00 to 12.30 - Cost: \$5		
Saturday 18 April		Woodturning Discussion Forum - Topic: Fruit - 9.00 to 12.30 - Cost: \$5		
Saturday 16 May		Woodturning Discussion Forum - Topic: To be advised - 9.00 to 12.30 - Cost: \$5		
Saturday 23 to Sunday 24 May		WSQ Open Days - Details to be advised.		

Sanding Area Downstairs



Most club members would have noticed, and hopefully, experienced the recent changes to our downstairs workshop sanding area by now.

Please ensure safety is a major part of your work when using this area. This, along with the correct operation of the necessary gates and the cleaning up of the work area will make this a happy and safe work area.

Changes like this do not just happen. It takes a considerable time and planning for projects like this to become a reality.



Special thanks go to Barry Wilson for his input and time making special gates and other parts at home to make this project possible. Thanks also must go to Bob McGeechan who organised ducting and gates for the project. Bob also organised the laying of the concrete slab for the drum sander. Thanks must go to Bob and his concreting crew who assisted with this work. Well done all those involved.

Peter Churchward
Toy Group Convenor

Thanks to Architectural Timber Joinery



The WSQ Toy Group is very grateful to Architectural Timber Joinery at Wacol for their donation of quality timber offcuts each week to support the work of our team.

Peter Churchward
Toy Group Convenor

All contributions for the April 2020 edition of Turning Talk need to be submitted by no later than Saturday 28 arch 2020.

Annual General Meeting

WSQ's AGM will be held at 9.30 am on Tuesday 17 March 2020, at 19 Pine Street Greenslopes.

The agenda is:

- Welcome and apologies
- Confirmation of Minutes of Special General Meeting held on 26^h November 2019
- Presentation of Management Report
- Presentation of Treasurer's and Auditor's reports
- Life Membership Award
- Other Business

Brian Creese
President

February 2020 Forum – Goblets

Saturday February 15 saw 10 members gather at Pine Street for the Discussion Forum on Goblets. The forum was prompted by the monthly Challenge to Members. It was pleasing to welcome a few new faces to the forum.

Brian raided the WSQ display case for some excellent example of goblets produced over the years. I wonder how many of you have a look in the display case from time to time. The inspiration for goblets was there, you just have to look. **Tip:** there are more than goblets in the display case. A visual scan of the bookcase could be easier than a Google search.



Image 1



Image 2



Image 3

Goblets from the cabinet included John Sheppard's long stem goblet (Image 1) from a demo to WSQ members back in 2018. There were some miniatures from the cabinet, one of which was a mini miniature with a captive ring (see Image 2 above). The creator of these pieces is currently unknown. If you can assist with naming the turner please advise a committee member. Brian had also brought along a goblet turned from Onyx (Image 3). It's shape and colour were quite pleasing and with plenty of weight it would be hard to knock over.



Image 4



Image 5

Ever thought of making a goblet from a coconut? Rob McGregor has, and he brought it along to the forum (Image 4). Rob and others explained that the shell of the

coconut is already quite thin so the trick is to find one that is as close to round as possible, so that you can turn a stem to fit the coconut shell. Well done Rob, as well as saving something from going to landfill you have shown some interesting colour and patterns in what is usually thrown away. Rob also had a small off-centre goblet made in a homemade Escoulen style chuck. (Image 5)

Tony is one of our newer members and had come along to seek some advice. He had some radiata pine that had been giving him some problems. Members present were able to explain several ways in which to create a better dovetail to more securely hold the wood in the lathe. Tony asked several questions and took notes to refer to later, as the group discussed problems they had encountered, and the techniques available to overcome the difficulties.

Shakes in wood, here was new term for Tony and your writer. For those who don't know **Shakes** are natural occurring defects in standing trees **caused** by a lengthwise separation of latewood fibres. **Shakes** were once thought to be **caused** by external stress factors such as wind and temperature extremes (often called wind **shakes**); however, research has found that a bacterium is the true **cause** of **shake**.

A surface **shake** occurs on only one surface, while a through **shake** extends from one side to the opposite or adjoining side of the piece. You may not see a through **shake** so use your PPE, particularly a face shield and actively listen for a change in sound as you progress the chisel through the wood.

Tip: Fruit wood is ideal timber from which to turn goblets.

Most turners have trouble with tear out in the base of the goblet or egg cup. Wayne gave us another handy **Tip:** wet the timber, a paint brush dipped in water is ideal for the task. This will raise the fibres

allowing the next cut with a sharp tool to cut more effectively. The heat generated from the cut will dry the timber. Repeat as necessary. Wayne explained that he remembered a technique from grade 8 “shooting the endgrain” and applied it to turning

There were a couple of goblets with captive rings which opened up a discussion as to the various dedicated tools available to do the job. Don has a collection, mostly from his Father and drew out the profiles on the whiteboard. Brian had a cylinder that he had been practising captive beads on. The discussion on those tools concluded that although most were aware of the specialist tools for beads those that had them in their kit were not using them. Will we see them at the swap and sell in March.

John D and Don both presented goblets and admitted that it was the first goblet that they had attempted. John made a good fist in his first attempt and admitted that he was lucky in that the Crappy piece of log that he selected from had very good colour and some excellent patterns when it was turned. (Image 6).



Image 6

Image 7 is Harold’s first attempt. Harold admitted that he had struggled with the process having used a faceplate and some pieces of scrap wood from his collection. Ideas were floated around as to how others approached making a goblet. I liked Harold’s concept, and would like to have a crack at turning a small bowl blank to a suitable shape, leaving the tenon on the bottom to attach the foot pedestal to. I found the contrast in grain patterns very interesting. While Harold may have been challenged in the turning aspect his joinery skill is very good. Mortise and tenon between the cup and pedestal and the pedestal consist of two pieces of wood.



Image 7




Tip: Goblets are an ideal entry for a competition in identical pairs category. Make three and select the best two.

As usual it was an informative session and thanks to all present for their participation. The March Forum will be “Whatever You Want”, no not the Status Quo song, bring along anything you have made in the last month. If you are struggling to finish your piece bring it along and get some advice and tips that will help.

For those who are/were into Status Quo
<https://www.youtube.com/watch?v=BGUeRbHWNZ4> is a link to the song if want to hear it again.

John Carney
 Acting Vice President

Future Non-WSQ Events

	Dates	Details
	20 – 22 March	RNA Showgrounds, Bowen Hills 10am to 4pm daiy \$12 - \$16 https://www.timberandworkingwithwoodshow.com.au/our-shows/
TURNFEST	27 – 29 March	Seaworld Resort Bookings required. http://www.woodworkingsuppliesqld.com.au/turnfest/index.php
	27 April and 1 May	SawStop Demonstrations Carbatec Brisbane Store 128 Ingleston Rd, Wakerley QLD Multiple sessions available, contact Carbatec for details https://www.carbatec.com.au/sawstop-demonstration
	2 – 4 May	Maleny Shwgrounds 8.30am – 5pm \$12 - \$16 http://www.malenywoodexpo.com/

Geoff Holbeck
 Editor – Turning Talk

UQ Rowing Trophy Project – October 2019

On a dark winter evening there was a knock at the door...

Sorry wrong genre:

Brian Creese received a phone call one evening, from Ross, a member of the University of Queensland Rowing Club. He had recently acquired a trophy that needed a base created. Would we be able to turn something up? The brief included “a large flat area for names plates to be added over an extended period of time”. Oh, and by the way we have around three weeks before the presentation day.



Brian phoned around a few people, and we agreed that Ross would drop in on a Tuesday evening and we would see what needed to be done and if it were feasible. John Sheppard and Dan Woodward took a first look at it, and took an audible in-breath: it was a reasonably large trophy, so where would we quickly find a piece of timber to suit?

Ian walked Stuart with a nice piece of Brazilian Ash. It was perfect for the job – and a short discussion on trading terms ensued.

The trophy is about 400mm tall, so the base needed to be quite substantial. Stuart's block of timber was about 250 mm tall, so it matched reasonably. The base itself would be relatively straightforward, but how to attach it securely to the cup was another question entirely.

Dan and Ian started out on reducing the weight of the base – it was a solid, heavy piece and could be an impediment rather than just a support! With a 65mm Forstner bit eating into the end grain, it took the rest of the evening to get it partially hollowed: it was a nice hard timber.



Ian took it home to shape and hollow it out. A chuck spigot and a spigot close to the cup size was also created ready for the fitting on the next Tuesday. We further hollowed it out to reduce some of the weight. It was at this point we cast around for ideas on how best to affix the base to the cup: there were no internal thread points, so we were on our own. There was a small rolled edge that we opted to use. David came up with the concept of splitting a disk to allow it to be inserted into the space and pushed out into the recess under the roll. We spoke at length with the group gathered, and ultimately opted for a variant of that... Ian created a timber pressure disk with a bolt hole, then had the split disk (into three) which we could wedge into place under the rim. With the tightly fitting spigot squeezing into the cup, and the timber inside pulling it together, a wing nut tightened it all into one unit. A satisfied customer picked it up on Friday, ready for a final polish and presentation ceremony on Saturday.

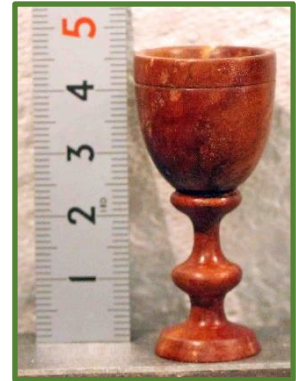
Ross was really happy with the end product, and covered the costs, plus a donation to the club.



Ian Symes
WSQ Member

Making a Goblet with the aid of the Nova Centre System - TK-Centre

This goblet was turned on a Nova DVR-XP lathe using a TK-G3 chuck with the aid of the Nova TK-Centre System



These are the items from the Nova Centre System used for this project.



Nova Centre System - TK-Centre

The following are the steps to making this goblet.

1. The timber blank is mounted in the chuck with the centre items 1 and 2 used to support the end so it remains centred while the chuck is tightened.
2. True the blank to a cylinder using a Roughing Gouge.
3. Remove the tailstock and using a 3/8" Spindle Gouge carve out the inside of the cup. I use a Spindle Gouge because the flute is a smaller curve than a bowl gouge and therefore the top non-cutting wing is further away from the timber reducing the risk of a catch. The gouge is gently pushed into the timber at the centre and then tip is swept towards you while dropping the handle. That is, if looking at the end of the timber the gouge is swept up to the 10 o'clock position.
4. Next the cup is sanded and the finish of EEE and U-Beaut Glow applied.



5. It is important to now mark the depth of the cup so you get the correct shape of the outside.



6. Shape the goblet using both a 3/8" and 1/4" Spindle Gouge. The 1 to 2 o'clock edge of the tool is used to prevent the tip catching. Then apply the finish.
7. There is a relatively larger piece of timber in the chuck which has to be removed to complete the base of the goblet so I parted off as much as possible.



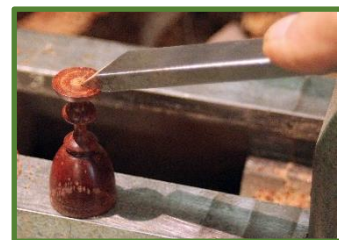
How to reverse the goblet in the chuck, grip it and trim the base without snapping the stem.

This is the Nova Centre System provides the solution

8. Using item 3 from the diagram above with the centre pin removed I then wrap cloth tape around this cone centre (which has a No 2 Morse Taper) to protect the timber. The cone goes in the headstock and the tailstock is brought up to apply enough tension to hold the timber against the cone.



9. The waste on the base can now be turned away with either a Screw Chisel or the Detail Spindle Gouge till the waste is all but gone.



10. Remove the piece from the lathe and carve off the small remaining nipple.

Allan Short
WSQ Member

Letters to the Editor

From: Janelle
Sent: Monday, 17 February 2020 10:29 AM
To: Brian Creese <brian.creese@bigpond.com>
Subject: Re: Intarsia demonstration - Kathy Wise

Hello Brian, I would just like to say THANK YOU, from myself and my mum Helen Batho.

For the fantastic day Thursday with Kathy Wise. It was great, very informative, interesting and you have a wonderful set up there for demonstrations.

Thank you again.
Janelle White

From: "Michele Martens"
Subject: RE: Turning Talk Newsletter
Date: 18 February 2020 at 4:47:49 pm AEST
To: "Lynette Dowd"

Thank you very much Toni and all

I really admire what you and all others there, do.

I admire the people's passion, foresight, ingenuity and talent that you all have.

I am in awe of the beautiful items that are brought to fruition from various pieces of timber that come to you as just that, then *come alive* as something wonderful.

Thank you all for your time

Regards

Michele Martens

Geoff Holbeck
Editor – TurningTalk

Membership Matters

Birthdays

We have 1 birthday for March.

- Don Doolan

We have 3 birthdays for April.

- John McIntosh
- Danielle Randal
- Gerard Fogharty

New Member

- Georgie Crossley from Bellbarrie

New members, when signing in please look on the small white board next to the cash tin for your name badges.

Alwyn Clark
Membership Secretary

Council Library Displays

	Northside Team	Southside Team
February	Kenmore	N/A
March	Indooroopilly	Logan West
April	Hamilton	Carindale

John Byrne
WSQ Member

Geoff Holbeck
Editor – Turning Talk

The views expressed in this publication are not necessarily those of the Woodturners Society of Queensland or its Management Committee.

Other organisations are welcome to use, with appropriate acknowledgement, editorial material from this publication.

You're invited to contribute to the content of TT.

To do so, preferably by Email:

gholbeck@hotmail.com

Or, by mail:

C/O TT EDITOR @ WSQ



We've been crafting
woodworking tools in
Sheffield, England for
almost 200 years.

Robert Sorby

As one of the world's premier manufacturers of specialist woodworking tools, we are proud to say we still craft every tool right here in Sheffield, England. Our tools are made from the finest raw materials, using traditional methods and with an attention to detail you won't find anywhere else.

Each tool is meticulously processed in stages by our craftspeople. Every single tool is cut, ground, polished, hardness tested, sharpened, assembled

and packed for shipping – ultimately crafted to provide a lifetime of use in your workshop.

With an extensive range of unique, premium tools, backed by our lifetime warranty, you need look no further for the best tools you can buy. It's our attention to detail and customer first approach that puts Robert Sorby at the top of its class. You can rely on our experience – we know tools.

Proudly distributed by:

carbatec
THE HOME OF WOODWORKING

Find us at:

128 Ingleston Road
Wakerley QLD 4154

(07) 3390 5888 | www.carbatec.com.au

Tree of the Month

Blackwood, Tasmanian/Queensland



Blackwood Tree

Botanical name: *Acacia melanoxylon*.
Other common names: Queensland Blackwood, Sally Wattle, Paluma Blackwood.
Family name: Mimosaceae.

Distribution: A medium sized hardwood mainly available from Tasmania, but found through South Australia and up the Eastern coast to Queensland. Grows to 30m (100ft) but generally shorter.

Colour: Heartwood is a beautiful golden brown with narrow bands of darker colour indicative of growth rings. Sometimes reddish streaks are present.

The timber: The timber is of medium and even texture with a generally straight grain although wavy grain produces an attractive fiddleback appearance.

Mechanical properties: Moderately durable it is mainly used in interior applications. Low density for a hardwood it does not possess great strength but is good for steam bending.

Working properties: Tasmanian Blackwood works well with both hand and machine tools although cutter angles should be reduced for figured material. Does not require pre-drilling for screws or nails. Gluing is generally good. Polyester and other catalysed finishes are retarded in curing. Finishes well and takes most finishing treatments well.

Uses: Principally used in high class furniture and cabinet work due to its excellent appearance. It is also used for panelling, turnery, flooring, carving and gun stocks. It is available as a veneer.

Availability: Moderate.



Blackwood Timber



Tasmanian Blackwood Vase by Ian Symes



Blackwood and Jacaranda Vase by Allan Short

Geoff Holbeck
Editor – *Turning Talk*

The text, timber image and tree image were sourced from "Timber in Australia in Colour" by David C Clark, and the turned images were provided by WSQ

Turning Talk

Published by the
Woodturners Society of Queensland Incorporated

Management Committee

President: Brian Creese 3378 4041
Vice President: Bob Kennedy 3892 4675
Secretary: Rhonda Clark 3803 4270
Treasurer: Mike Dunne 0410 400 954
Members: Alwyn Clark 3803 4270
Barry Wilson 0409 260 786
Bob McGeechan 3394 1839
Geoff Holbeck 3901 6782
John Carney 3245 6135
John Donaldson 0407 022 403
Reg Weber 3206 2325

Other Positions

Newsletter Editor: Geoff Holbeck 3901 6782
Membership Secretary: Alwyn Clark 3803 4270
Librarian: Alwyn Clark 3803 4270
Assistant Librarian: Toni Dowd 3175 0383
Storekeeper: Don McMillan 0439 704 622
Training Manager: Rob McKee 3207 1785
Asst. Training Manager: Wayne Molloy 3273 2659
Mt Coot-tha Co-ordinator: Rob McKee 3207 1785
Competition Organiser: Harold Wiltshire 3390 3646
Web Co-ordinator: Gary Bidgood 0407 144 763
Welfare Officer: Vacant
Caretaker: Len Young 3397 8827

**WM WOODWORK
MACHINERY... PLUS**

Unit 8 / 43 Station Avenue Darra Ph 3705 8558

Your newest woodworking shop in town,
stocking RIKON, RECORD POWER and
WOODFAST, is offering all WSQ Members

10% OFF ALL MACHINERY



Check out our brand new

The WOOD 10" Contractor Table Saw
WORKER \$1,699 incl GST

For more information please visit:
www.woodworkmachinery.com.au



VICMARC®
MACHINERY PTY LTD

PROUDLY AUSTRALIAN MADE AND OWNED
SINCE 1984



AUSTRALIAN MANUFACTURERS OF QUALITY WOODTURNING LATHES, CHUCKS AND
ACCESSORIES

For more information and to see our full range of products visit our website

www.vicmarc.com

Email: vicmarc@vicmarc.com Ph: (07) 3284 3103 Fax: (07) 3283 4656