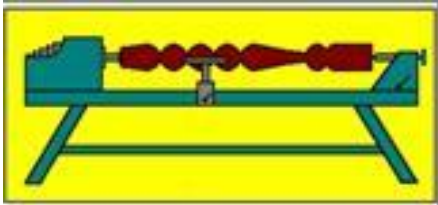


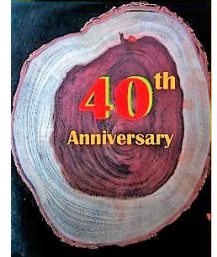
# Turning Talk

Volume 33 Number 9

October 2019



## Presidential Words For October 2019



### WSQ display at Brisbane Square Library

Toni Dowd, Allan Short and others have organised a display of woodturning and other woodcraft items at the Brisbane Square Library on George Street, Brisbane City. The display, which features a huge range of our members' work, will run for 3 months: 1 October to 31 December. The display catalogue is available on our website at <http://woodturnerssocietyqld.org.au/brisbane-square-library/>

All WSQ members are encouraged to visit the display. Please also encourage your friends and relatives to come, have a look and comment in our Visitors' Book. The Brisbane Square Library is open every day of the week at the following times:

- Monday, Tuesday & Thursday: 9.00 am to 6.00 pm
- Wednesday and Friday: 9.00 am to midnight
- Saturday: 9.00 am to 4.00 pm
- Sunday: 10.00 am to 3.00 pm

And remember, from 1 October, travel on Brisbane busses and ferries is free for Seniors with a GoCard on weekdays outside of rush hours, i.e. 8.30 am to 3.00 pm and 6.00 pm to 6.00 am, and all weekend.



### Special General Meeting

An important event next month will be the Special General Meeting on Tuesday 26 November, when we will be electing the Management Committee for 2020. All positions become vacant, and members are encouraged to consider nominating for a position on the Committee. After two years in the Presidency, I will not be standing for re-election. John Reed has also indicated that he will not be standing and is looking forward to a well-earned break after serving five years as Treasurer. Please start thinking ahead to next year and whether you would like to contribute to the running of the Society, improving our workshop facilities and planning WSQ events and activities.

**Brian Creese**  
*President*

## Diary and Looking Ahead at WSQ October 2019 and Beyond

<i>Date</i>	<i>Day of Month</i>	<i>Session Title</i>	<i>Convenors</i>	<i>Times</i>
1 Oct	1 <sup>st</sup> Tuesday	Open Workshop  New Member Training Pyrography Group Evening Open Workshop	John Sheppard & Bob McGeechan  Rosie Thornton	8.00am – Noon  1.00pm – 3.30pm 1.00pm – 4.00pm 6.00pm – 9.00pm
3 Oct	1 <sup>st</sup> Thursday	WSQ Safety & Workshop Induction for New Members		9.00am – 12noon
4 Oct	1 <sup>st</sup> Friday	Toy and Open Workshop Toy Group Open Workshop	Peter Churchward	8.00am – 3.00pm
5 Oct	1 <sup>st</sup> Saturday	WSQ Demonstration		9.00am – Noon
8 Oct	2 <sup>nd</sup> Tuesday	Open Workshop New Member Training Evening Open Workshop	Wayne Molloy	8.00am – Noon 1.00pm – 3.30pm 6.00pm – 9.00pm
10 Oct	2 <sup>nd</sup> Thursday	Pre-Booked Project Tuition Cost - \$25.00	Rob McKee	9.00am – 12.30pm
12 Oct	2 <sup>nd</sup> Saturday	Management Committee Meeting		9.00am – Noon
14 Oct	3 <sup>rd</sup> Monday	Pyrography Group	Rosie Thornton	9.00am – Noon
15 Oct	3 <sup>rd</sup> Tuesday	Open Workshop  New Member Training  Evening Open Workshop	John Sheppard & Bob McGeechan Rob McKee (Former DVA Team members welcome) John Sheppard	8.00am – Noon  1.00pm – 3.30pm  6.00pm – 9.00pm
19 Oct	3 <sup>rd</sup> Saturday	Woodturning Discussion Forum/ Show and Tell	John Carney	9.00am – Noon
22 Oct	4 <sup>th</sup> Tuesday	Open Workshop New Member Training  Evening Open Workshop	Rob McKee Rob McKee (Former DVA Team members welcome) Allan Dickson	8.00am – Noon 1.00pm – 3.30pm  6.00pm – 9.00pm
24 Oct	4 <sup>th</sup> Thursday	Pre-Booked Project Tuition Cost - \$25.00	Rob McKee	9.00am – 12.30pm
29 Oct	5 <sup>th</sup> Tuesday Only if one falls in the month	Open Workshop New Member Training Evening Open Workshop	Rob McKee Rob McKee Rob McKee	8.00am – Noon 1.00pm – 3.30pm 6.00pm – 9.00pm
<b>Future Events and Important Dates</b>				
<b>Tuesday 1 October to Tuesday 31 December</b>		<b>WSQ Display at Brisbane City Square Library - See “Presidential Words” on page 1 of this newsletter for further information</b>		
<b>Saturday 5 October</b>		<b>Demonstration by Pat Johnson titled “Artistic Embellishment of a Turned Item” - 9.00 – Noon - Cost: \$5</b>		
<b>Saturday 19 October</b>		<b>Woodturning Discussion Forum/ Show and Tell - Topic: Lidded Boxes - 9.00 – Noon - Cost: \$5</b>		
<b>Saturday 19 to Sunday 27 October</b>		<b>Bribie and District Woodcrafters are holding their annual Competition and Exhibition entitled “The Wonder of Wood” - Bribie Island Community Arts Centre - open 9am to 4pm daily - Cost: Free - See further details below.</b>		
<b>Tuesday 26 November</b>		<b>Special General Meeting - Details are set out below,.</b>		
<b>Saturday 14 and Sunday 15 December</b>		<b>WSQ Woodturning Exhibition at the Mt Coot-tha Botanic Gardens Auditorium - 9am to 4pm - Cost: FREE - Refreshments available at modest cost</b>		
<b>Tuesday 17 December</b>		<b>WSQ Christmas Party - Details to be advised closer to the date.</b>		

NOTICE OF

## SPECIAL GENERAL MEETING

This is to advise all members that

In accordance with the constitution

of the

WOODTURNERS SOCIETY OF QUEENSLAND INC

There will be a

SPECIAL GENERAL MEETING

At 19 Pine Street

Greenslopes

AT 9.30 AM

TUESDAY 26 NOVEMBER 2019

For the Following Purpose Only:

1. Confirmation of Minutes of Annual General Meeting held on 19<sup>th</sup> March 2019.
2. Election of the Management Committee for 2020.
3. Other Business

(Please detach)

Woodturners Society of Queensland Inc

Nomination Form for the Management Committee 2020 \*

Nomination for the Position of (please tick one only)

President  Vice President  Secretary

Treasurer  Committee Member

I nominate ..... (Member's name) for the above position.

Your name (please print) ..... Signed .....

Seconded by (please print) ..... Signed .....

I, the member nominated for the above position, accept the nomination.

Signature ..... Date.....

**\*(NB: Nomination must be in the hands of the Secretary by no later than 12/11/2019)**

## Jest a Moment

A polar bear walks into a bar and says, "I'll have a gin and ..... tonic."

The bartender asks, "Why the big pause?"

And the polar bear says, "I don't know, I've always had them."

### Anonymous

WSQ Member

Special thanks to Peter FitzSimons of The Sydney Morning Herald for this one.

# Treasurer's Report

A summary of our financial position for August is:

<b>Receipts</b>	
Container Refunds	\$170
Memberships	\$1,745
Meeting Income	\$1,214
Shop Profit	\$951
Mt Coot-tha Income	\$4,744
Bunnings Sausage Sizzle Income	\$1,531
Advertising in Newsletter	\$80
Sundry Income	<u>\$52</u>
	\$10,487
<b>Less Payments</b>	
Workshop Expenses	\$402
Member Badges	\$145
Newsletter Expenses	\$92
Cleaning	\$240
Insurance	\$404
Library Purchases	\$145
Mt Coot-tha Expenses	\$542
Bunnings Sausage Sizzle Expenses	\$409
Mt Coot-tha December Expenses	\$190
Repairs & Maintenance	\$78
Rates	\$284
Rent	\$438
Telephone & Internet	\$140
Other Expenses	<u>\$178</u>
	\$3,687
<b>Net Profit/(Loss)</b>	<b>\$6,800</b>
<b>Cash at Bank</b>	<b>\$50,003</b>

Comments re some of the larger items are:

- Final profit for the August Mt Coot-tha exhibition was \$3,219, which was an excellent outcome.
- As advised in the September edition of Turning Talk, the Bunnings Sausage generated a profit of \$1,122.
- The Mt Coot-tha December expense is for printing of brochures, some of which were handed out at the August event.
- Rent of \$438 is the annual rent paid to Brisbane City Council for our premises.

**John Reed**  
*Treasurer*

## Future Events

### Demonstration

#### **Saturday October 5**

Pat Johnson will take a bowl or a platter and, with the help of stencils, an air brush and acrylic paints, will demonstrate how to take a piece of turned wood and turn it into a piece of art. Pat has travelled the world and is recognized as a world class woodturner. He constantly looks to learn and be inspired by those he meets. This will be an excellent chance to learn from a professional turner who is pleased to share his experience and offer encouragement to others

to bring more to their art. One of Pat's projects is shown below.



## Forum

### Saturday 19 October Forum

Lidded boxes - Now here is a topic that should generate some interesting discussion. What is a lidded box? The description will be broad and most of us will have differing thoughts. Maybe you have made one of a rectangular shape with a box making jig. Bring it along. There are many styles that can be made on a lathe such as a simple Needle Case. What about Theo's spherical things that have been holed and then had a contrasting lid and finial? Are they boxes? They can be used to hold precious items like a box. Without the lid they might be just a hollow vessel. If you have any of these bring them along and be part of the discussion and let's see where it leads us. Remember the forum is just a place to share experiences and to learn from each other

### Exhibition in Grafton

The Clarence Valley Wood Workers Association in Grafton NSW are hosting an Exhibition between 25 October - 3 November 2019. Pat Johnson will be demonstrating at this exhibition which will be part of the Jacaranda Festival.

**John Carney**

*Management Committee Member*

### Bribie and District Woodcrafters 2019 Competition and Exhibition

Bribie and District Woodcrafters are holding their annual Competition and Exhibition entitled "**The Wonder of Wood**" which will feature around 300 competition and non-competition display items, as well as over 300 for sale only items.

The Exhibition will be open 9am to 4pm daily from Saturday 19 October to Sunday 27 October. The venue for this event is the Matthew Flinders Gallery, Bribie Island Community Arts Centre, Sunderland Drive Bribie Island.

This Exhibition is always worth a visit.

Bribie and District Woodcrafters has invited WSQ to attend as a group. In addition to viewing the Exhibition etc., we will also tour the club's facilities and workshop. This visit has been arranged for Monday morning 21 October with an anticipated arrival time at Bribie Island of 9.00am. Morning tea will be provided. If you would like to attend please either note the list on the notice board at WSQ Hall or contact me on 0414 661 395 or at [treasurer.wsq@inet.net.au](mailto:treasurer.wsq@inet.net.au) by Friday 11 October.

**John Reed**

*Treasurer*

## September Forum 2019

On Saturday 21 September 2019 six members gathered in the Phil Harris Auditorium for an enlightened discussion about their experience in pen making. All attendees had brought examples of their work.

We started at the end with the first point being about finishes. I have noticed that finish seems to come up early in most of the forums. Whatever piece is on the table one of the first questions is "what finish did you use?". All in the group had tried CA finish and there were several methods employed to apply CA. The discussion identified timbers such as Huon Pine and NG Rosewood that contain oils preventing the successful application of CA. To overcome this apply Methylated Spirits (a denatured Alcohol) to dry the oil. Gary explained that he often uses blond shellac thinned down to about 50% as a sealer before sanding further with "EEE" cream. Please note "EEE" reacts with steel and if you hit a bush with the cream it will bleed black back into the timber. To prevent the black reaction you always wipe from the end of the pen over the bush DO NOT pull the polishing material back towards the pen. Lift the cloth replay a new section of cloth to the pen

blank and friction rub from the centre of the blank to the ends continuing over the bush.

Eventually, the "EEE" will be completely removed from the steel. You will know this by the lack of blackening on the polishing cloth.

A link that may assist with pen finishes. Supplied by Gary Bidgood. Kurt Hertzog is a world professional pen turner if you don't know him.

[http://www.kurthertzog.com/articles/20\\_PenFinishes\\_LR0106.pdf](http://www.kurthertzog.com/articles/20_PenFinishes_LR0106.pdf)

**Drilling the Blanks** has posed issues to us all and as a group having tried several methods it would seem that drilling on the lathe using pin jaws and reversing the blank at about the  $\frac{3}{4}$  mark is the way to avoid a lot of the issues. It helps if an accurate centre point is marked on each end of the blank before drilling commences. Gary uses HSS twist bits that he sharpens on his Tormek, explaining that he gets a point with a second bevel that helps with accuracy. He is able to sharpen bits down to 3mm on the Tormek. Tapered point drill bits are another way to drill. These tools were very

good for Gary's laminated work. Brad point drills were the most used tool here.

**Setting the Tube in the Blank.** CA and epoxy seem to be the choices here. It was agreed these are messy and requires a planned set of actions to achieve a satisfactory result. Rob had the answer, Urethane Glue, a single component moisture curing adhesive that cures on the exposure of moisture in either the substrate or atmosphere. In its cured state the adhesive is elastic and flexible. Gorilla glue is one example.

Don B who likes to create a chunky look in his creations added that he often adds colour to the tube when crafting acrylic pens. This helps hide the brass that comes through in some of the lighter shades of acrylics. He also uses it to create a deeper richness of colour as witnessed in two pens he turned from the same acrylic but he coloured the brass tubes on one. Did you know that Don creates a pen for each colour shirt he has. I am sure if you ask him he will tell you the story of how that came about.

**The Pen Mill.** We all have them; some of us have more than one. No one thought they were ideal particularly on the really hard woods like gidgee. Don M had a sled jig to use on the bandsaw and stated the blade must be sharp. Various methods of using the blank against a sanding disc were discussed. Thanks to Richard Cooper who shared this with me in a conversation at Tuesdays workshop. If you have both right angles set correctly it is very effective. A deburring tool is perhaps the easiest way to clear the inside edge of the brass

tube. Gary always pulls a cloth through his tubes to remove dust and debris.

**The Choice of Chisel.** Surprisingly everyone had a personal and different chisel that was predominately used to shape the pen. The only consensus was that none of us was using a scraper to do the job. It is here that we discussed youtube videos. It needs a comment that a lot of content for turning articles that is available on the internet, does not cover good techniques in turning. At times the potential for harm is extremely high. WSQ provides a safe place in which to learn, share and practice the art of woodturning. I see this willingness to share knowledge at workshops and forums regularly and I thank all members for adding their stitch to the rich tapestry of my life (so far).

We all make mistakes and have no wish to throw away expensive parts of kits. Disassembly tools are used. The writer is still looking for an effective way to disassemble the top barrel of a parker style click pen. A suggestion I am yet to try is using a hand lubricant such as hand sanitiser. I also have been advised that check some back copies of Woodturning Magazine possibly issues 279 and 314. These and many other resources are available in the WSQ Library.

Thank you to all the participants the morning passed quickly, the company was good and the exchange of information flowed freely. Next Month's Forums is on lidded boxes any style or shape it really just needs a lid.

**John Carney**  
*Management Committee Member*

## Increase to Carbatec Men's Shed Discount

Carbatec – The Home of Woodworking' has increased the discount to Men's Shed organisations to 15%, **but importantly the discount NOW applies to members as well.**

When ordering by phone or in person state that you are a member of Woodturners Society of Qld to receive the 15% discount. Because there are exceptions this can't be made and automatic process.

The following exemptions apply as per the Carbatec web site at <https://www.carbatec.com.au/Customer-Information>:

Please note that Club Discounts and Member Offers are only available on full price products

unless otherwise stated. At this stage the discount is not currently available to apply automatically online however if you contact our Customer Service Centre or your local store with your order, they can apply this for you.

The following exclusions do apply:

- Festool Products and Accessories
- Axiom Products and Accessories
- Special Orders
- Freight costs
- Purchase of Gift Cards
- Cannot be used in conjunction with any other discount

**Allan Short**  
*WSQ Member*

## Resene Paints Donation to Toy Group



I would like to express my thanks to Resene Paints for their donation of 48 x 1/2L cans of beautiful coloured acrylic paints to the Toy Group.

The donation has created a bit of a buzz in the Toy Group - comments like “they’re great paints”, “bright colours”, “go on easily” and “clean up with water is a breeze”, are floating around!

Below are some web links to use if you want more information about the company and their products:

<https://www.resene.com.au/>

<https://www.resene.com.au/comn/colorshops/colorshops.php?i=au,nc>

**Geoff Holbeck**  
*Editor – Turning Talk*

## An Interesting Project – Gold and Ebony Ring

I recently took on an interesting project for Alastair Bax at Forest Lake. Alastair had made up a man’s wedding ring comprising two white gold bands mounted on “aged red hardwood coated with a polymer” (left hand photo). However, the grain was far too open and the wood deteriorated rapidly, so Alastair approached WSQ to ask if we could make a replacement wooden base using a harder timber.

New Guinea Ebony (*Diospyros ferrea*) was used for the replacement. A 25-mm diameter stock was mounted in pin jaws. The centre was drilled with a 19-mm Forstner bit, then widened to the required internal diameter of 20 mm with a skew. The ring was turned down to outside diameter of 23 mm and a rebate was cut for the larger metal band, ensuring a close fit and a square shoulder to ensure no gaps. After fitting the larger metal band, the ring was parted off slightly over the required length and reversed onto a jam chuck for cutting the smaller rebate. The metal bands were glued on with Megapoxy, and the completed ring was polished using MicroMesh abrasive down to 12,000 grit.

Alastair was delighted with the final product (right hand photo), and donated \$75 to the Society. He also offered to do any jewellery repairs or polishing for WSQ members at discounted rates. If you would like to take him up on this offer, his phone number is 3372 7278.



**Brian Creese**  
*President*

## September Demonstration

Twelve curious members and friends gathered in the Phil Harris Auditorium on the morning of Saturday September 7 to attend a Rob McKee demonstration titled “Designing and Turning a Chair Leg”.

Rob started the session by discussing, at a high level, the various styles of furniture over time as it effected chair design. He discussed shapes, features, and general characteristics, including how legs are attached to chairs through the use of dowels or tenons. He advised that the average chair leg was 460 mm in length and that the back legs were usually different to the front legs. He discussed a sample chair leg (see below) which he had made using Hoop Pine.



Next, Rob demonstrated how he would draw a chair leg design with an HB pencil on a narrow length of thin ply (see below). He also demonstrated the value of a good quality metal ruler which he used to form the broad curves in the design. Rob stated that if you were making a replacement leg for an old chair you would need to use imperial measurements.



Rob mounted a suitable sized Hoop Pine blank on the lathe using a drive centre in the headstock and a live centre in the tailstock. He put the ply with the design on the blank and marked the square parts of the design on the blank. Rob used a skew chisel and made careful “V” cuts to define and shape the edges of the square sections. He then used a roughing gouge to turn to round the rest of the blank. Next he used a small file to make indentations in the edge of the ply where the design features were to go. Rob then rested the ply against the rounded section of the blank and transferred these markings to the blank using a pencil.

And then, the magic happened. Rob used a parting tool and callipers to set target diameters, and created decorative beads, coves, flats between features, and the flowing shape of the leg using a skew, a spindle gouge, a beading tool, and a roughing gouge. It was a

master class in spindle turning by a woodturner of the highest standard. We were all mesmerised by Rob’s skill.



Rob in Action



The Completed Leg

Rob attached a router jig to the lathe, and after much consideration of the options, he decided to cut 8 flutes into the leg, one in line with each corner and one in line with the middle of the flats. A number of careful adjustments had to be made to set this up, but it worked perfectly in execution, as can be seen in the following image.



The Completed Leg with Flutes

Those present expressed their appreciation for Rob’s excellent demonstration. Well done Rob.

**Geoff Holbeck**  
*Editor – Turning Talk*





We've been crafting  
woodworking tools in  
Sheffield, England for  
almost 200 years.

## *Robert Sorby*

As one of the world's premier manufacturers of specialist woodworking tools, we are proud to say we still craft every tool right here in Sheffield, England. Our tools are made from the finest raw materials, using traditional methods and with an attention to detail you won't find anywhere else. Each tool is meticulously processed in stages by our craftspeople. Every single tool is cut, ground, polished, hardness tested, sharpened, assembled

and packed for shipping – ultimately crafted to provide a lifetime of use in your workshop.

With an extensive range of unique, premium tools, backed by our lifetime warranty, you need look no further for the best tools you can buy. It's our attention to detail and customer first approach that puts Robert Sorby at the top of its class. You can rely on our experience – we know tools.

*Proudly distributed by:*

**carbatec**  
THE HOME OF WOODWORKING

Find us at:

128 Ingleston Road  
Wakerley QLD 4154

(07) 3390 5888 | [www.carbatec.com.au](http://www.carbatec.com.au)

# Membership Matters!

## New Member

- Andrew Massey of Bardon

New members, when signing in please look on the small white board next to the cash tin for your name badges.

**Brian Creese**  
*President*

# Letter to the Editor

From: "Olivia Nielsen" <onielsen@olsca.org>  
To: wsq@bigpond.com  
Sent: Saturday, 28 Sep, 2019 At 2:50 AM  
Subject: Woodturners Society of QLD Inc.

I'm writing you a quick note about your woodturners society's webpage. I came across your page (woodturnerssocietyqld.org.au/links/) while looking for some woodturning info to use for some projects that I am planning on doing with my family this fall. We usually make a bunch of homemade wood projects for gifts for Christmas (trying to start early this year!). Just wanted to reach out to say thanks for all the help!

As a thank you, I wanted to share a woodturning resource that my daughter, Evie, found:

<https://nam10.safelinks.protection.outlook.com/?url=https%3A%2F%2Fwood-furnaces.net%2Fguide-woodturning-basics.html&data=02%7C01%7C%7C15687b7b75464c5149b808d743ec5421%7C84df9e7fe9f640afb435aaaaaaaaaaaaa%7C1%7C0%7C637052554618732142&sddata=jf0qeF14ISU%2FDfRBSqcamh%2B5v4nnEncE8qrmLZc3Sazc%3D&reserved=0>

[furnaces.net%2Fguide-woodturning-basics.html&data=02%7C01%7C%7C15687b7b75464c5149b808d743ec5421%7C84df9e7fe9f640afb435aaaaaaaaaaaaa%7C1%7C0%7C637052554618732142&sddata=jf0qeF14ISU%2FDfRBSqcamh%2B5v4nnEncE8qrmLZc3Sazc%3D&reserved=0](https://nam10.safelinks.protection.outlook.com/?url=https%3A%2F%2Fwood-furnaces.net%2Fguide-woodturning-basics.html&data=02%7C01%7C%7C15687b7b75464c5149b808d743ec5421%7C84df9e7fe9f640afb435aaaaaaaaaaaaa%7C1%7C0%7C637052554618732142&sddata=jf0qeF14ISU%2FDfRBSqcamh%2B5v4nnEncE8qrmLZc3Sazc%3D&reserved=0)

Can you include this in your woodworking sites section? It had some useful basics for us, so she thought it could help others who visit your webpage. Plus, I thought it would be neat to show Evie that she is helping someone online. :-)

If you have any ideas for good woodworking projects to make for gifts, I'd love to hear about them. Thanks again!

Take care,  
Olivia Nielsen

# Council Library Displays

	Northside Team	Southside Team
September	Albany Creek	Corinda
October	Strathpine	Corinda Inala
November	Zillmere	Annerley

**John Byrne**  
*WSQ Member*

**Toni Dowd**  
*Assistant Librarian*

**The views expressed in this publication are not necessarily those of the Woodturners Society of Queensland or its Management Committee.**  
*Other organisations are welcome to use, with appropriate acknowledgement, editorial material from this publication.*

You're invited to contribute to the content of TT.  
To do so, preferably by Email:  
[gholbeck@hotmail.com](mailto:gholbeck@hotmail.com)  
Or, by mail:  
C/O TT EDITOR @ WSQ  
19 Pine Street, Greenslopes  
Brisbane, Qld 4120

**All contributions for the November 2019 edition of Turning Talk need to be submitted by no later than Tuesday 29 October 2019.**

## Tree of the Month – Red Mallee



Red Mallee "Habit"

suitable for lumber, though they do have a propensity for burl growths that can be harvested and used for turning and other small specialty projects.



Red Mallee (sealed)

**Common Name(s):** Red Mallee  
**Scientific Name:** *Eucalyptus oleosa* and *E. socialis*  
**Distribution:** Australia  
**Tree Size:** 13-26 ft (4-8 m) tall, 1 ft (.3 m) trunk diameter  
**Average Dried Weight:** 66 lbs/ft<sup>3</sup> (1,050 kg/m<sup>3</sup>)  
**Specific Gravity (Basic, 12% MC):** .79, 1.05  
**Janka Hardness:** 2,490 lb<sub>f</sub> (11,060 N)\*  
*\*Estimated hardness based on specific gravity.*

**Color/Appearance:** Heartwood ranges from pink to orangish red. Pale yellow to gray sapwood is sharply demarcated from heartwood. Nearly always seen in burl form.

**Odor:** No characteristic odor.

**Allergies/Toxicity:** Besides the standard health risks associated with any type of wood dust, no further health reactions have been associated with Red Mallee, though several other species within the *Eucalyptus* genus have been reported to cause various allergic reactions.

**Pricing/Availability:** Generally available in burl caps and sawn burl blocks. Prices are on par with other imported solid-wood burl products.

**Sustainability:** This wood species is not listed in the CITES Appendices or on the IUCN Red List of Threatened Species.

**Common Uses:** Turned objects, knife and gun grips, and small specialty objects.

**Comments:** The term mallee refers to a species' general growth form (known as a "habit" in biology). Usually smaller and shorter than trees, mallees grow multiple smaller-diameter stems from a common root system. Because of this, most mallee species are ill



Red Mallee Lidded Containers by Ian Symes



Red Mallee Lidded Container by Sandy May

**Geoff Holbeck**  
 Editor – Turning Talk

*The text and timber image were sourced from The Wood Database (wood-database.com). The tree image was sourced from Wikipedia. The turned images were provided by WSQ*

## Turning Talk

Published by the  
Woodturners Society of Queensland Incorporated

### Management Committee

President: Brian Creese 3378 4041  
Vice President: Bob Kennedy 3892 4675  
Secretary: Rosie Thornton 0456 073 790  
Treasurer: John Reed 3263 1861  
Members: Alwyn Clark 3803 4270  
Bob McGeechan 3394 1839  
Geoff Holbeck 3901 6782  
John Carney 3245 6135  
John Donaldson 0407 022 403  
Paul Tierney 3288 3509  
Reg Weber 3206 2325

### Other Positions

Newsletter Editor: Geoff Holbeck 3901 6782  
Membership Secretary: Alwyn Clark 3803 4270  
Librarian: Alwyn Clark 3803 4270  
Assistant Librarian: Toni Dowd 3175 0383  
Storekeeper: Don McMillan 3814 4820  
Training Manager: Rob McKee 3207 1785  
Asst. Training Manager: Wayne Molloy 3273 2659  
Mt Coot-tha Co-ordinator: Rob McKee 3207 1785  
Competition Organiser: Vacant  
Web Co-ordinator: Gary Bidgood 0407 144 763  
Welfare Officer: Vacant  
Caretaker: Len Young 3397 8827

**WM WOODWORK**  
MACHINERY... PLUS

Unit 8 / 43 Station Avenue Darra Ph 3705 8558

Your newest woodworking shop in town,  
stocking RIKON, RECORD POWER and  
WOODFAST, is offering all WSQ Members

**10% OFF ALL MACHINERY**



Check out our brand new

The **WOOD** 10" Contractor Table Saw  
**WORKER** \$1,699 incl GST

For more information please visit:  
[www.woodworkmachinery.com.au](http://www.woodworkmachinery.com.au)



**VICMARC**®  
MACHINERY PTY LTD

PROUDLY AUSTRALIAN MADE AND OWNED  
SINCE 1984



GRINDING  
REST &  
SHARPENING  
JIG

VICMARC  
SLOW SPEED  
GRINDER



QUALITY  
LATHES

CHUCKS



HUGE  
VAREITY  
OF CHUCK  
JAWS



AUSTRALIAN MANUFACTURERS OF QUALITY WOODTURNING LATHES, CHUCKS AND  
ACCESSORIES

For more information and to see our full range of products visit our website

[www.vicmarc.com](http://www.vicmarc.com)

Email: [vicmarc@vicmarc.com](mailto:vicmarc@vicmarc.com) Ph: (07) 3284 3103 Fax: (07) 3283 4656